

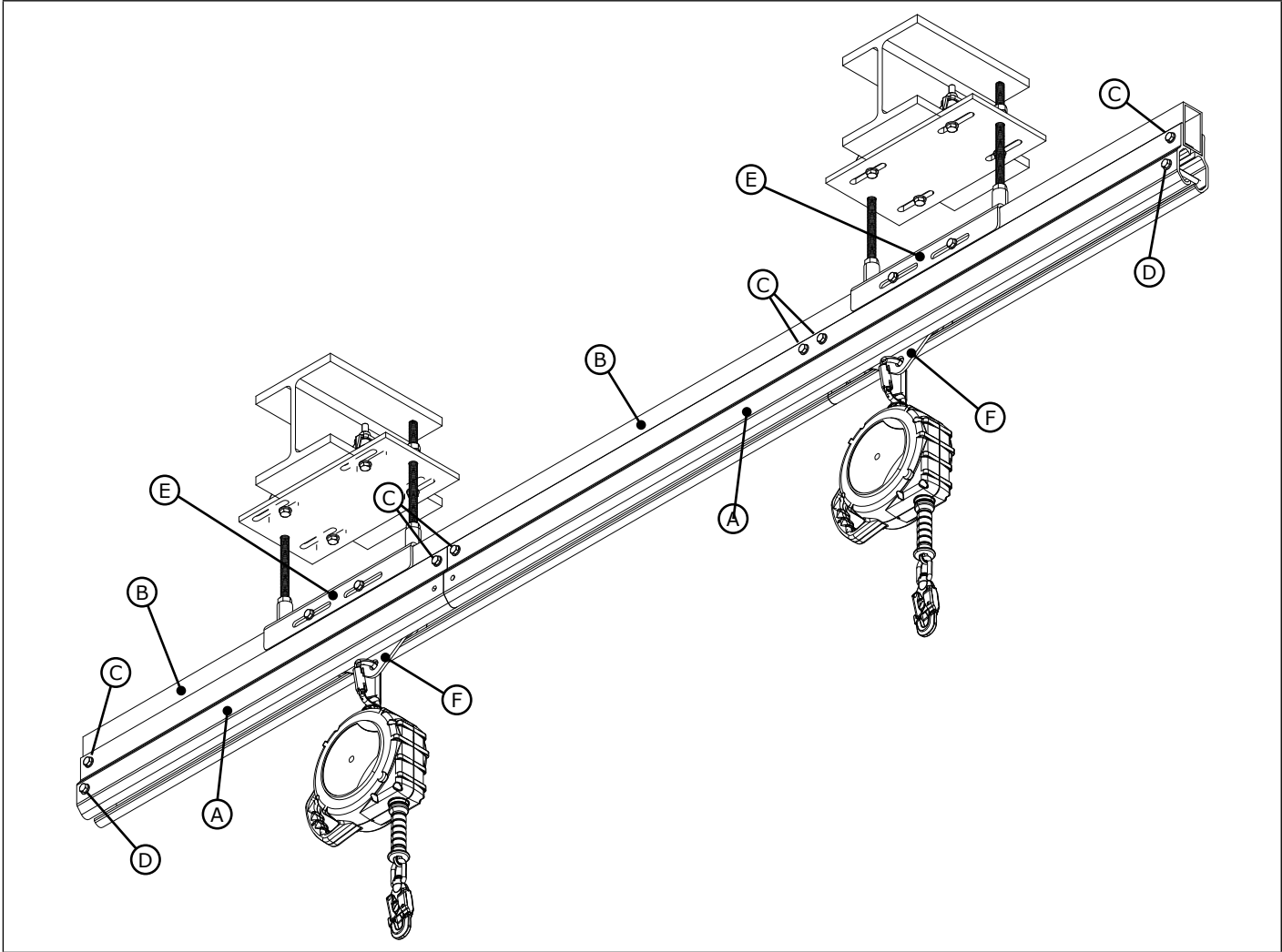


The Ultimate in Fall Protection

Always read and follow the warnings and instructions for use.

Glyde-Saf™ Rail

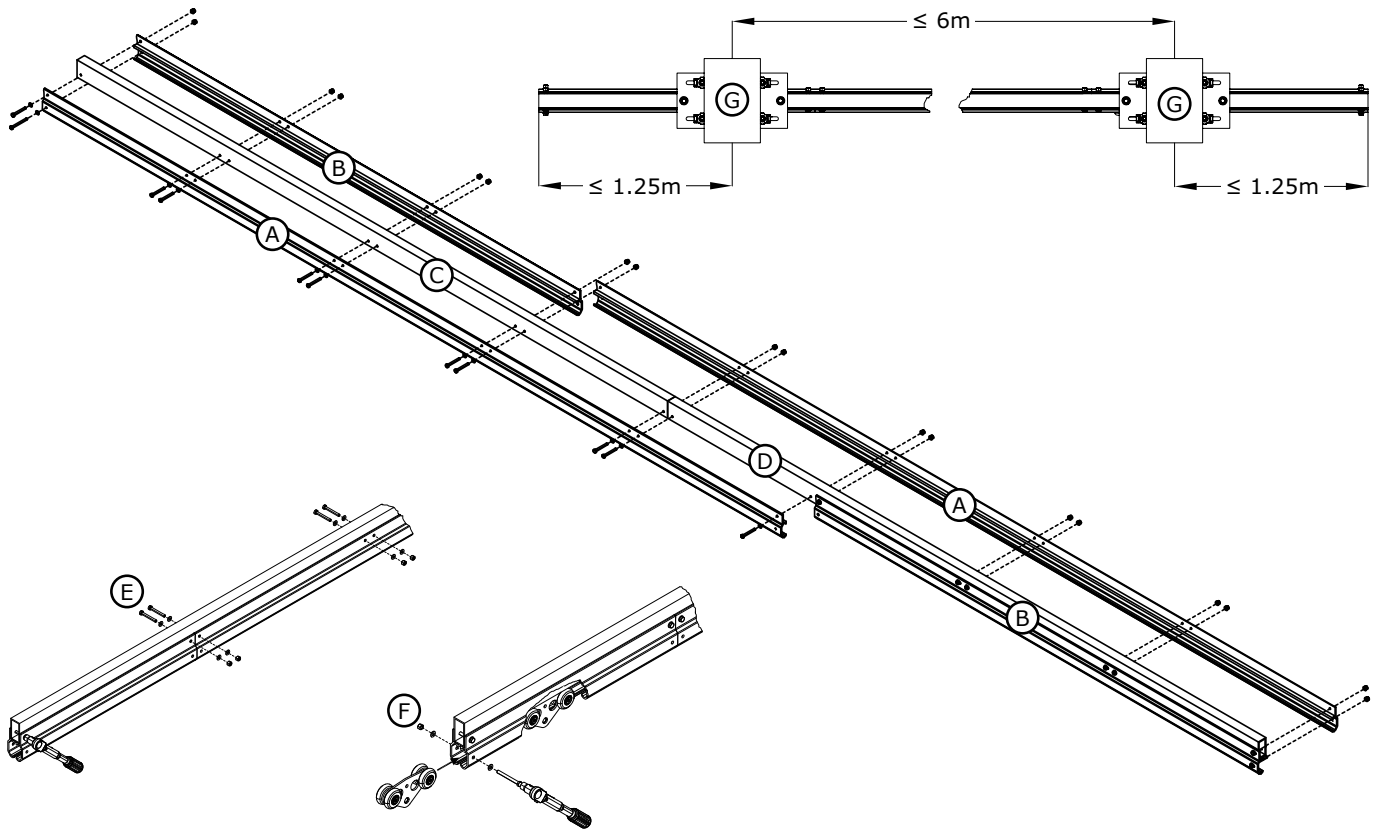
TECHNICAL DATA SHEETS



	Technical Data Sheet: 1396	Glyde-Saf™ Rail - System Layout	Page 2
(A)	Technical Data Sheet: 1394	Glyde-Saf™ Rail - Side Rail 1 - 7 Metre	Page 3
(B)	Technical Data Sheet: 1395	Glyde-Saf™ Rail - Backbone 2 - 7 Metre	Page 4
(C)	Technical Data Sheet: 1387	Glyde-Saf™ Rail - Side Rail Fixing Pack (Pack of 4)	Page 5
(D)	Technical Data Sheet: 1388	Glyde-Saf™ Rail - End Stop Fixing Pack (Pack of 2)	Page 6
(E)	Technical Data Sheet: 1389	Glyde-Saf™ Rail Bracket - Perpendicular Clamp	Page 7
	Technical Data Sheet: 1392	Glyde-Saf™ Rail Bracket - Parallel Clamp	Page 8
	Technical Data Sheet: 1390	Glyde-Saf™ Rail Bracket - Through-Hole Mount	Page 9
	Technical Data Sheet: 1391	Glyde-Saf™ Rail Bracket - Through-Hole Mount, Stainless Steel	Page 10
(F)	Technical Data Sheet: 1393	Glyde-Saf™ Rail - 4 Wheel Traveller	Page 11

Technical Data Sheet: 1396

Glyde-Saf™ Rail - System Layout



Length	A		B		C		D		E		F		G	
	Qty.	Part	Qty.	Part	Qty.	Part	Qty.	Part	Qty.	Part	Qty.	Part	Qty.	Part
8m	2	7241488	2	7241490	1	7241496	1	7241496	4	7241499	1	7241500	2	Bracket
	Glyde-Saf Rail - 5m Side Rail		Glyde-Saf Rail - 3m Side Rail		Glyde-Saf Rail - 4m Backbone		Glyde-Saf Rail - 4m Backbone		Glyde-Saf™ Rail - Side Rail Fixing Pack (Pack of 4)		Glyde-Saf™ Rail - End Stop Fixing Pack (Pack of 2)		7241501, 7241502, 7241503, or 7241504	
9m	2	7241487	2	7241490	1	7241496	1	7241495	5	7241499	1	7241500	3	Bracket
	Glyde-Saf Rail - 6m Side Rail		Glyde-Saf Rail - 3m Side Rail		Glyde-Saf Rail - 4m Backbone		Glyde-Saf Rail - 5m Backbone		Glyde-Saf™ Rail - Side Rail Fixing Pack (Pack of 4)		Glyde-Saf™ Rail - End Stop Fixing Pack (Pack of 2)		7241501, 7241502, 7241503, or 7241504	
10m	2	7241487	2	7241489	1	7241495	1	7241495	5	7241499	1	7241500	3	Bracket
	Glyde-Saf Rail - 6m Side Rail		Glyde-Saf Rail - 4m Side Rail		Glyde-Saf Rail - 5m Backbone		Glyde-Saf Rail - 5m Backbone		Glyde-Saf™ Rail - Side Rail Fixing Pack (Pack of 4)		Glyde-Saf™ Rail - End Stop Fixing Pack (Pack of 2)		7241501, 7241502, 7241503, or 7241504	
11m	2	7241487	2	7241488	1	7241495	1	7241494	6	7241499	1	7241500	3	Bracket
	Glyde-Saf Rail - 6m Side Rail		Glyde-Saf Rail - 5m Side Rail		Glyde-Saf Rail - 5m Backbone		Glyde-Saf Rail - 6m Backbone		Glyde-Saf™ Rail - Side Rail Fixing Pack (Pack of 4)		Glyde-Saf™ Rail - End Stop Fixing Pack (Pack of 2)		7241501, 7241502, 7241503, or 7241504	
12m	2	7241486	2	7241488	1	7241494	1	7241494	6	7241499	1	7241500	3	Bracket
	Glyde-Saf Rail - 7m Side Rail		Glyde-Saf Rail - 5m Side Rail		Glyde-Saf Rail - 6m Backbone		Glyde-Saf Rail - 6m Backbone		Glyde-Saf™ Rail - Side Rail Fixing Pack (Pack of 4)		Glyde-Saf™ Rail - End Stop Fixing Pack (Pack of 2)		7241501, 7241502, 7241503, or 7241504	
13m	2	7241486	2	7241487	1	7241494	1	7241493	7	7241499	1	7241500	3	Bracket
	Glyde-Saf Rail - 7m Side Rail		Glyde-Saf Rail - 6m Side Rail		Glyde-Saf Rail - 6m Backbone		Glyde-Saf Rail - 7m Backbone		Glyde-Saf™ Rail - Side Rail Fixing Pack (Pack of 4)		Glyde-Saf™ Rail - End Stop Fixing Pack (Pack of 2)		7241501, 7241502, 7241503, or 7241504	

SYSTEM REQUIREMENTS

Above figure and table show configurations for systems comprised of 2 Backbones and 4 Side Rails.

Side Rail and Backbone seams must be staggered with 1m minimum spacing between seams.

6m maximum Rail Bracket spacing.

1.25 m maximum cantilever overhang.

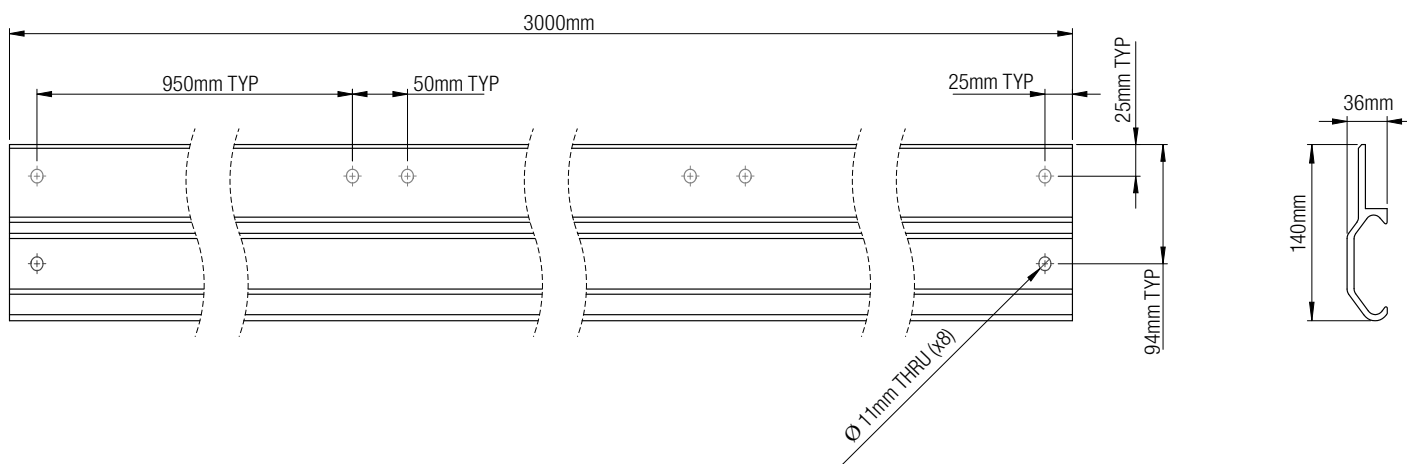
A maximum of 4 Travellers are allowed on each bracket-to-bracket span. Only one Traveller is allowed on each end cantilever section.

Fall Arrest and Fall Restraint require one Traveller per user. Suspended Access requires two Travellers per user. For Traveller capacity, see Technical Data Sheet 1393.

CONFORMITIES:	EN795:2012 Type D	CEN/TS 16415:2013
----------------------	-------------------	-------------------

Technical Data Sheet: 1394

Glyde-Saf™ Rail - Side Rail 1 - 7 Metre



Part No.	Component	Weight	Diagram with Hole Configurations
7241486	Glyde-Saf Rail - 7m Side Rail	22.1 kg	
7241487	Glyde-Saf Rail - 6m Side Rail	18.8 kg	
7241488	Glyde-Saf Rail - 5m Side Rail	15.7 kg	
7241489	Glyde-Saf Rail - 4m Side Rail	12.6 kg	
7241490	Glyde-Saf Rail - 3m Side Rail	9.4 kg	
7241491	Glyde-Saf Rail - 2m Side Rail	6.3 kg	
7241492	Glyde-Saf Rail - 1m Side Rail	3.1 kg	

APPLICATION

Rail forms the basis of the anchorage system and allows the Carriage to run unhindered along its path. To be used as part of an overhead mounted system.

The example above illustrates a 3m rail. Hole diameter and centres are equal throughout each rail length.

Anodizing options available on request.

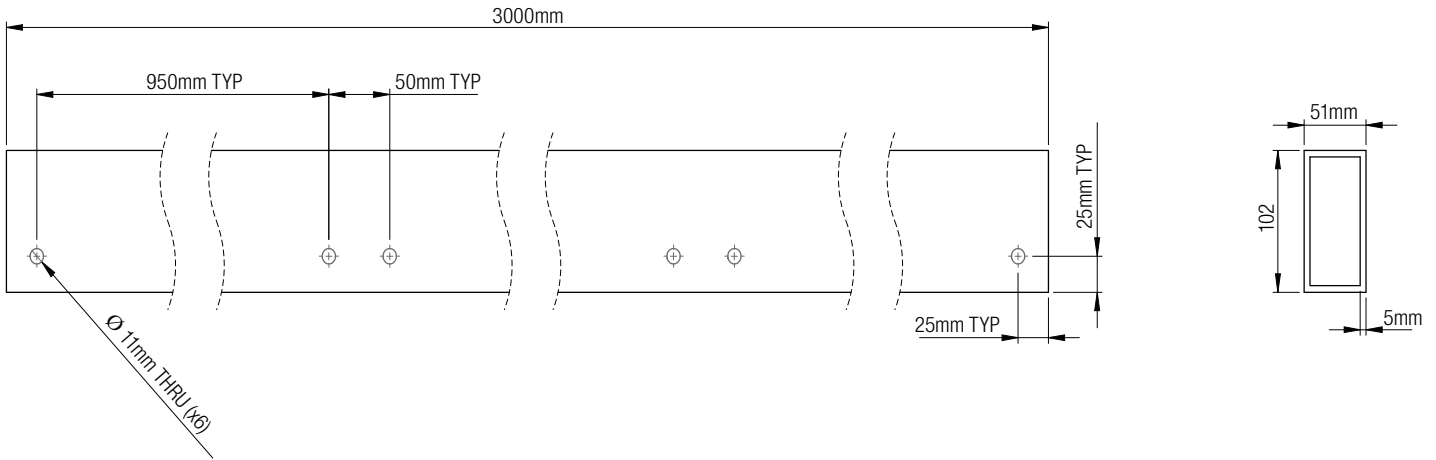
Fixings sold separately. For specific information please see Datasheets 1387 and 1388.

COMPONENT SPECIFICATION

Material	Finish	Weight
6082 T6 Aluminium	Natural	See table above.

Technical Data Sheet: 1395

Glyde-Saf™ Rail - Backbone 2 - 7 Metre



Part No.	Component	Weight	Qty. 7241499	Qty. 7241500	Diagram with Hole Configurations
7241493	Glyde-Saf Rail - 7m Backbone	25.8 kg	4	1	
7241494	Glyde-Saf Rail - 6m Backbone	22.2 kg	3	1	
7241495	Glyde-Saf Rail - 5m Backbone	18.5 kg	3	1	
7241496	Glyde-Saf Rail - 4m Backbone	14.8 kg	2	1	
7241497	Glyde-Saf Rail - 3m Backbone	11.1 kg	2	1	
7241498	Glyde-Saf Rail - 2m Backbone	7.4 kg	1	1	

APPLICATION

The Backbone connects the two sides of rail together and also securely holds the rail to the desired structure.

The example above illustrates a 3m rail. Hole diameter and centres are equal throughout each rail length.

Anodizing options available on request.

Fixings sold separately. See above table for number of Fixing Packs required per Backbone length. See Data Sheets 1387 and 1388 for Fixing Pack specifications.

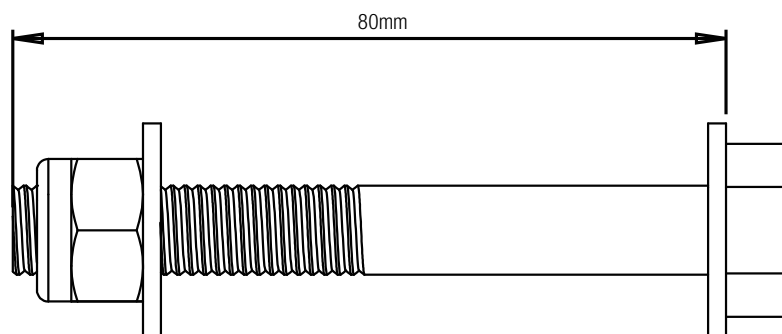
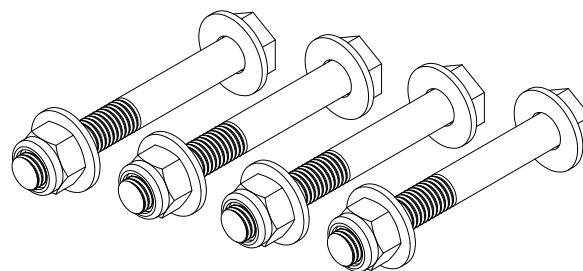
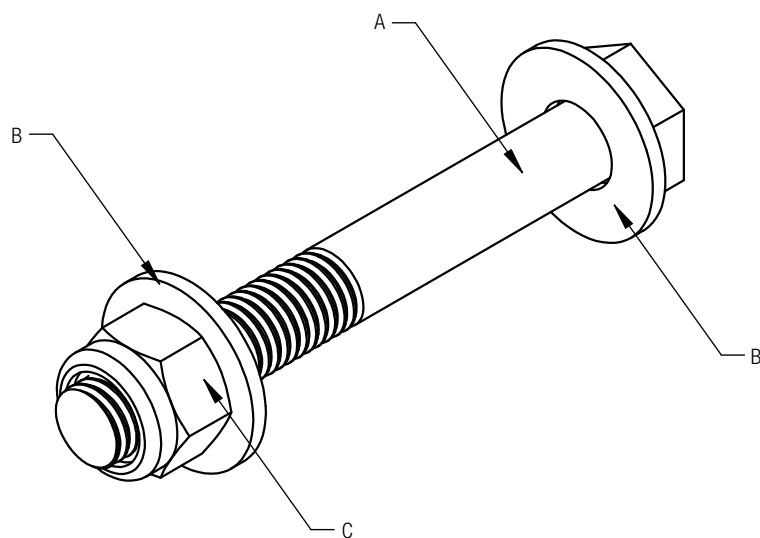
COMPONENT SPECIFICATION

Material	Finish	Weight
6082 T6 Aluminium	Natural	See table above.

Technical Data Sheet: 1387

Glyde-Saf™ Rail - Side Rail Fixing Pack (Pack of 4)

Part No: 7241499



APPLICATION

Used to secure Side Rails to Backbone.

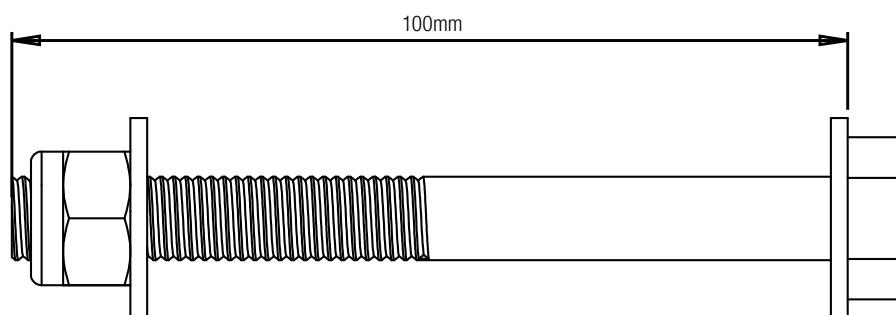
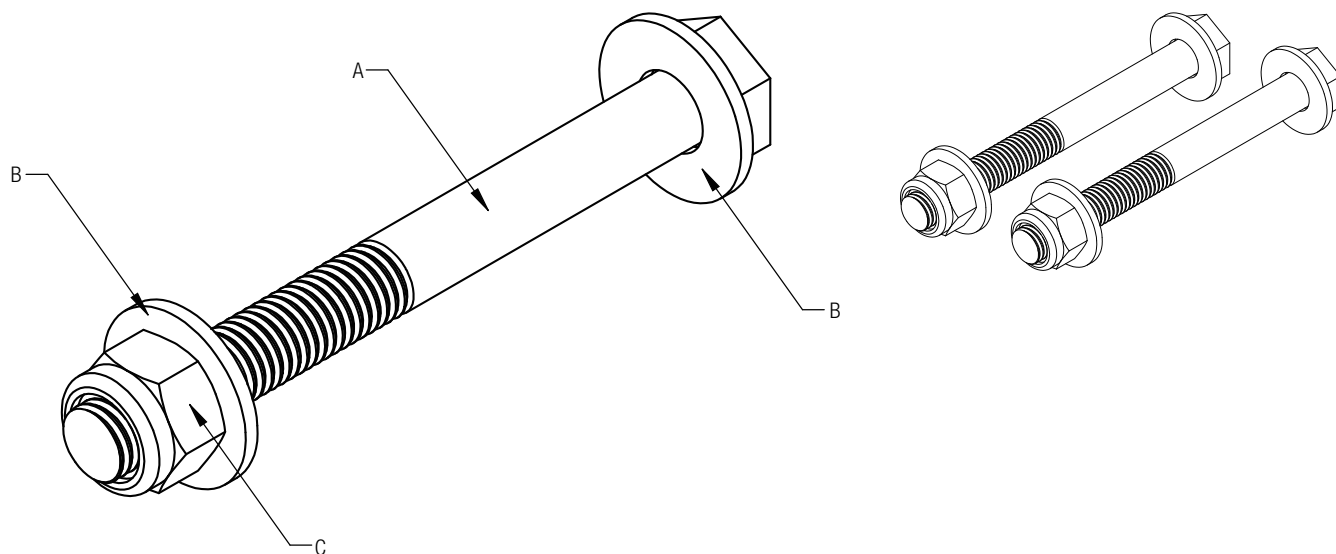
COMPONENT SPECIFICATION

	Component	Material	Finish	Weight
A	Qty. 4 - M10 x 80mm Bolt	A470 Stainless Steel	Natural	0.057 kg
B	Qty. 8 - M10 Washer	A470 Stainless Steel	Natural	0.004 kg
C	Qty. 4 - M10 Nyloc Nut	A470 Stainless Steel	Natural	0.012 kg
			Net Weight	.073 kg

Technical Data Sheet: 1388

Glyde-Saf™ Rail - End Stop Fixing Pack (Pack of 2)

Part No: 7241500



APPLICATION

Used at each end of the rail to prevent the traveller from rolling off the end of the rail.

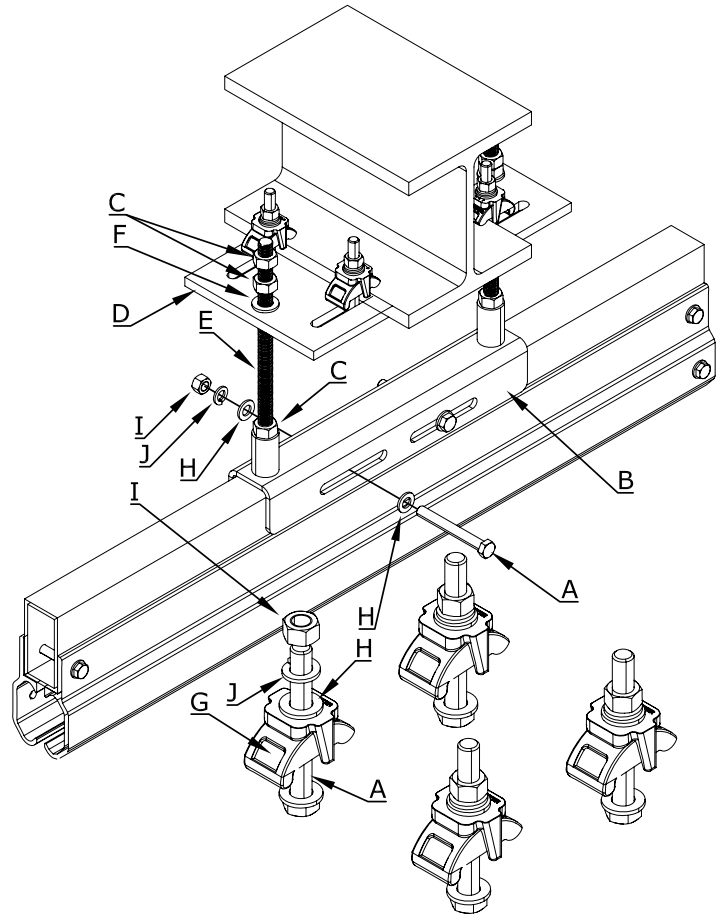
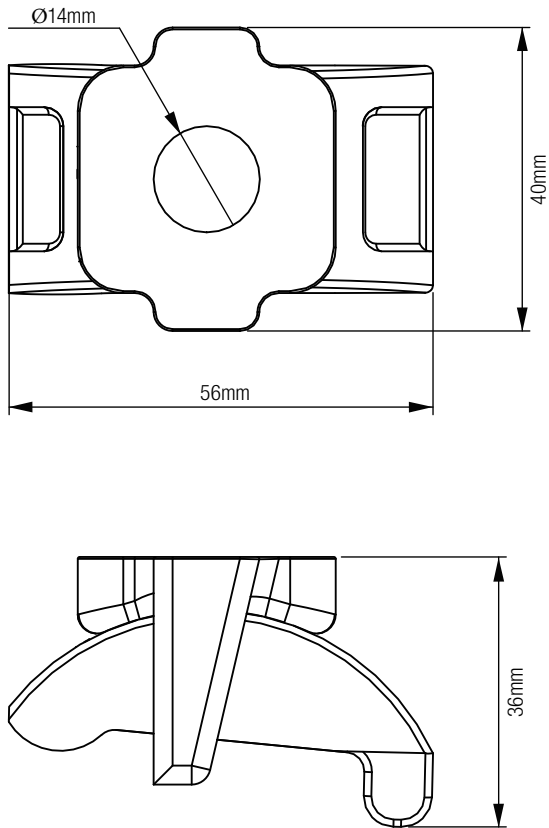
COMPONENT SPECIFICATION

	Component	Material	Finish	Weight
A	Qty. 2 - M10 x 100mm Bolt	A470 Stainless Steel	Natural	0.068 kg
B	Qty. 4 - M10 Washer	A470 Stainless Steel	Natural	0.004 kg
C	Qty. 2 - M10 Nyloc Nut	A470 Stainless Steel	Natural	0.012 kg
Net Weight				0.094 kg

Technical Data Sheet: 1389

Glyde-Saf™ Rail Bracket - Perpendicular Clamp

Part No: 7241501



APPLICATION

Attaches Glyde-Saf Rail Backbone to Anchorage Structure with the Backbone running perpendicular to the beam. Adjustable clamps mount on beam widths from 150mm to 300mm with flange thicknesses from 3mm to 12mm. Adjustable clamps clamp on parallel flanges or tapered flanges sloping less than 15°.

COMPONENT SPECIFICATION

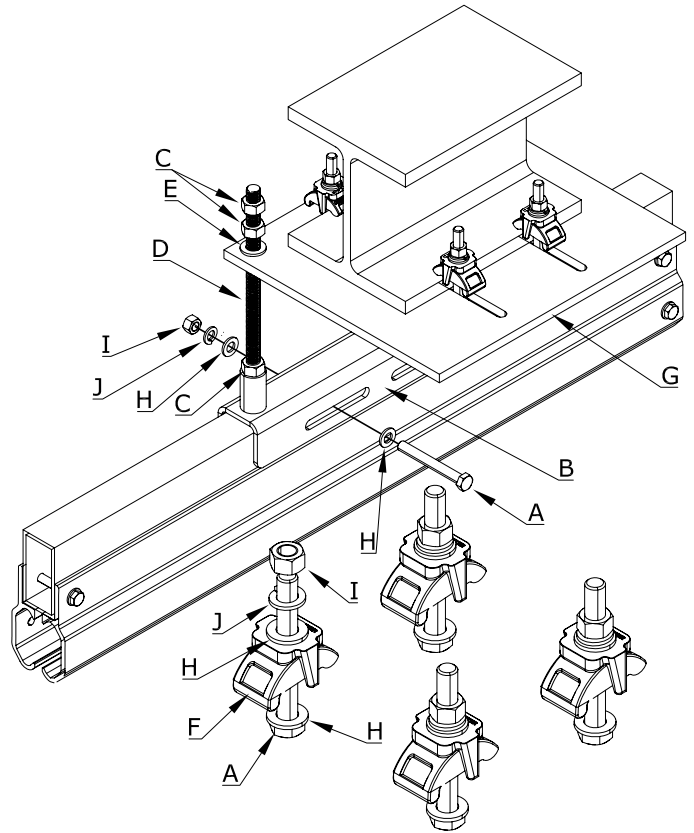
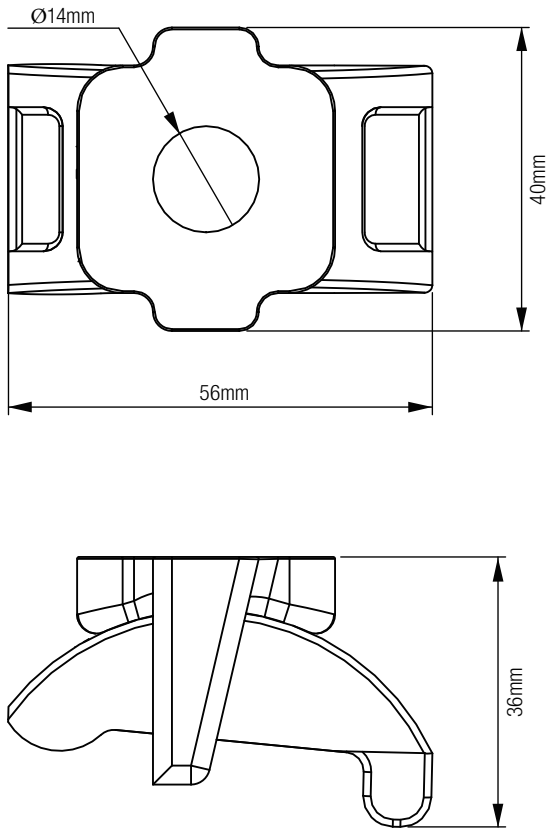
Material	Finish
Galvanized Steel	Natural

	Component	Material	Finish	Weight
A	Qty. 6 - M12 x 100mm Bolt	Steel	Galvanized	0.105 kg
B	Bracket	Steel	Galvanized	3.317 kg
C	Qty. 6 - M16 Nut	Steel	Galvanized	0.03 kg
D	Plate	Steel	Galvanized	6.05 kg
E	Qty. 2 - M16 x 300mm Threaded Rod	Steel	Galvanized	0.375 kg
F	Qty. 2 - M16 Washer	Steel	Galvanized	0.012 kg
G	Qty. 4 - M12 Lindapter Beam Clamp	Iron	Galvanized	0.181 kg
H	Qty. 12 - M12 Washer	Steel	Galvanized	0.006 kg
I	Qty. 6 - M12 Nut	Steel	Galvanized	0.015 kg
J	Qty. 6 - M12 Lock Washer	Steel	Galvanized	0.003 kg
	Net Weight			10.094 kg

Technical Data Sheet: 1392

Glyde-Saf™ Rail Bracket - Parallel Clamp

Part No: 7241504



APPLICATION

Attaches Glyde-Saf Rail Backbone to Anchorage Structure with the Glyde-Saf Rail Backbone running parallel to the beam. Adjustable clamps mount on beam widths from 150mm to 260mm with flange thicknesses from 3mm to 12mm. Adjustable clamps clamp on parallel flanges or tapered flanges sloping less than 15°.

COMPONENT SPECIFICATION

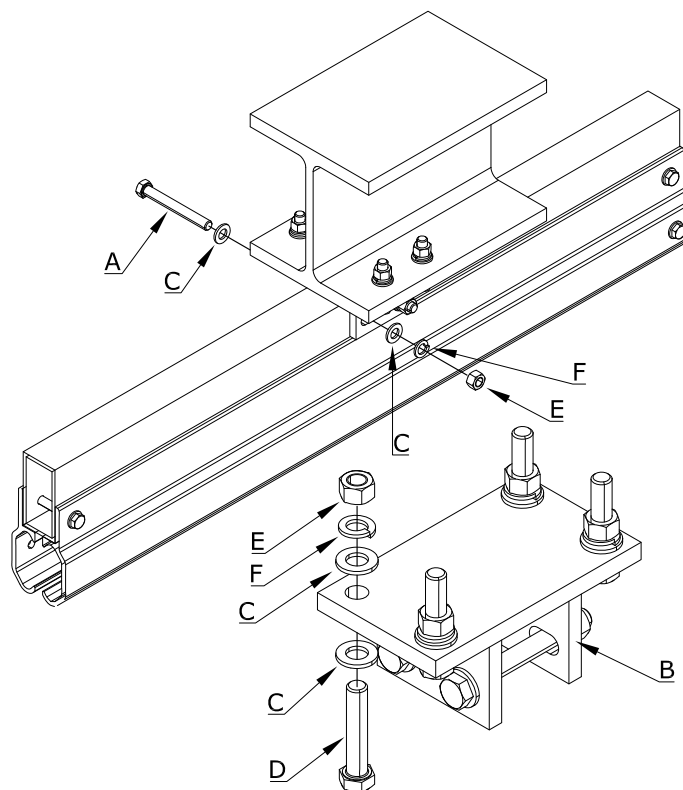
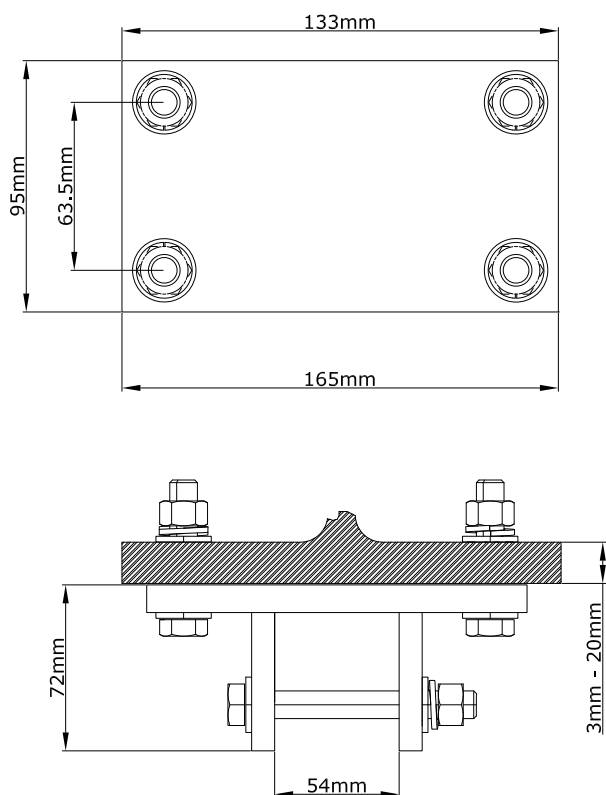
Material	Finish
Galvanized Steel	Natural

	Component	Material	Finish	Weight
A	Qty. 6 - M12 x 100mm Bolt	Steel	Galvanized	0.105 kg
B	Bracket	Steel	Galvanized	3.317 kg
C	Qty. 6 - M16 Nut	Steel	Galvanized	0.03 kg
D	Qty. 2 - M16 x 300mm Threaded Rod	Steel	Galvanized	0.375 kg
E	Qty. 2 - M16 Washer	Steel	Galvanized	0.012 kg
F	Qty. 4 - M12 Lindapter Beam Clamp	Iron	Galvanized	0.181 kg
G	Plate	Iron	Galvanized	12.66 kg
H	Qty. 12 - M12 Washer	Steel	Galvanized	0.006 kg
I	Qty. 6 - M12 Nut	Steel	Galvanized	0.015 kg
J	Qty. 6 - M12 Lock Washer	Steel	Galvanized	0.003 kg
Net Weight				16.709 kg

Technical Data Sheet: 1390

Glyde-Saf™ Rail Bracket - Through-Hole Mount

Part No: 7241502



APPLICATION

Attaches Glyde-Saf Rail Backbone to Anchorage Structure.

Bolts through flange thicknesses from 3mm to 20mm.

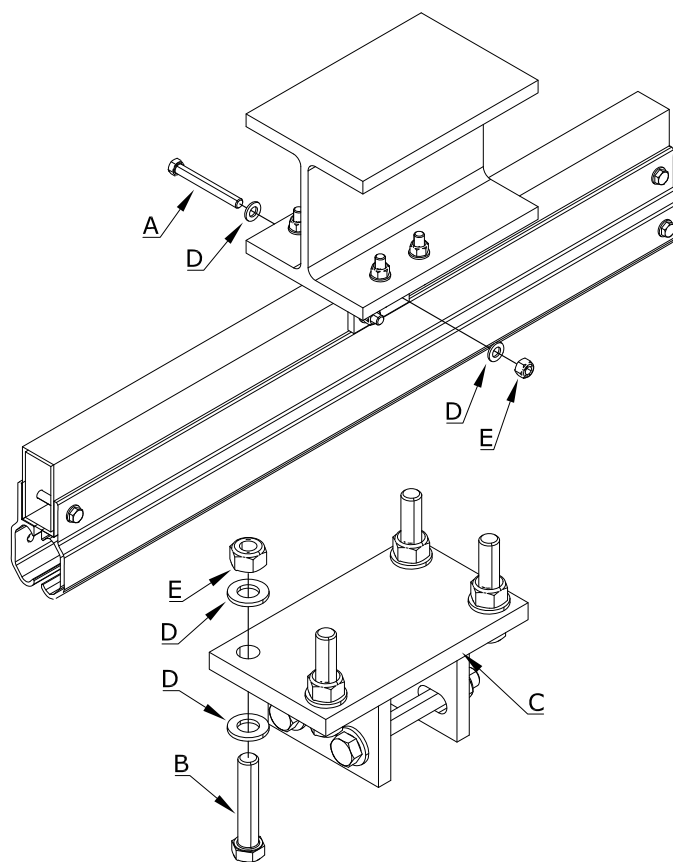
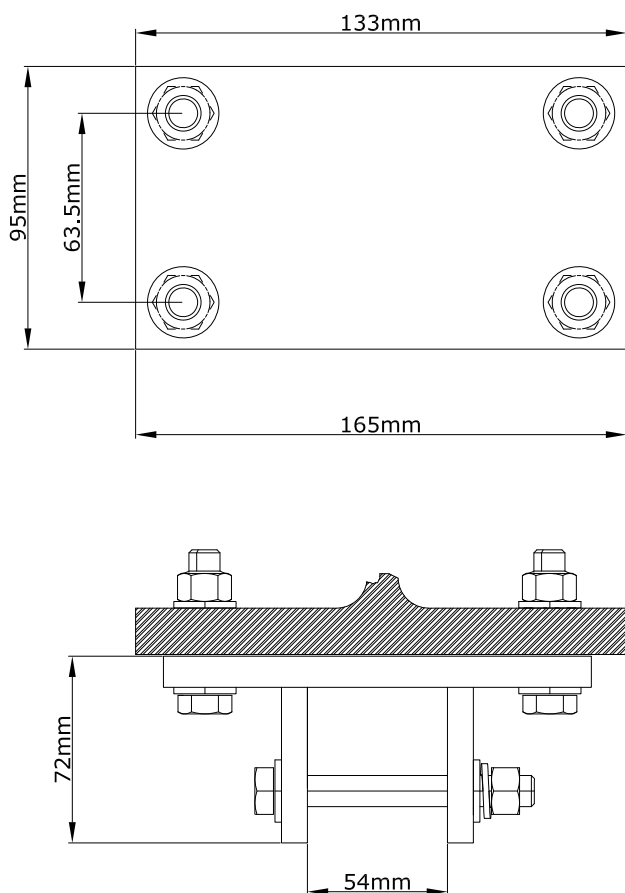
COMPONENT SPECIFICATION

	Component	Material	Finish	Weight
A	Qty. 2 - M12 x 100mm Bolt	Steel	Galvanized	0.105 kg
B	Bracket	Steel	Galvanized	2.253 kg
C	Qty. 12 - M12 Washer	Steel	Galvanized	0.006 kg
D	Qty. 4 - M12 x 60mm Bolt	Steel	Galvanized	0.01 kg
E	Qty. 6 - M12 Nut	Steel	Galvanized	0.015 kg
F	Qty. 6 - M12 Lock Washer	Steel	Galvanized	0.003 kg
	Net Weight			2.392 kg

Technical Data Sheet: 1391

Glyde-Saf™ Rail Bracket - Through-Hole Mount, Stainless Steel

Part No: 7241503



APPLICATION

Attaches Glyde-Saf Rail Backbone to Anchorage Structure.

Bolts through flange thicknesses from 3mm to 20mm.

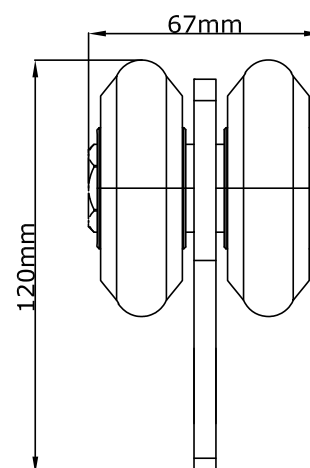
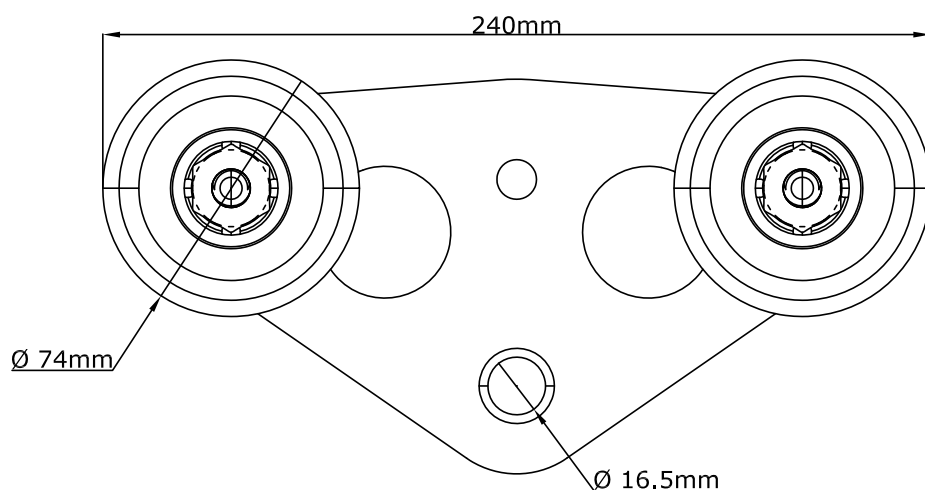
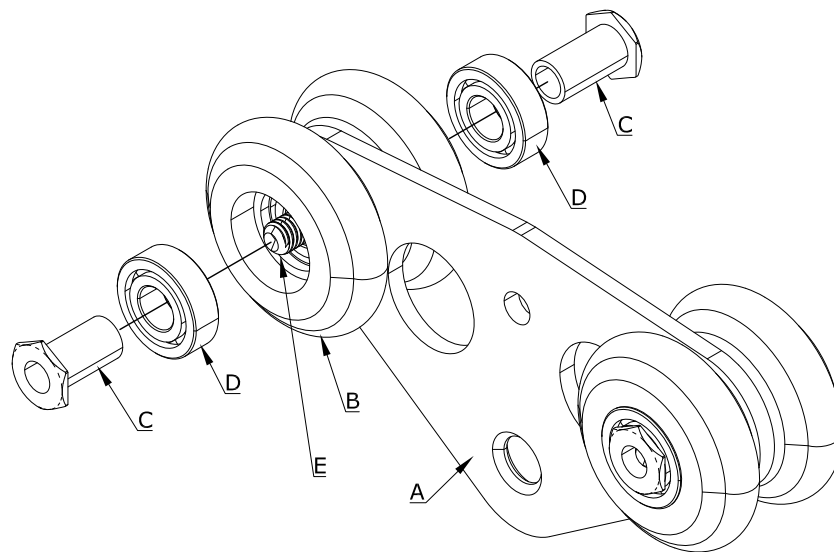
COMPONENT SPECIFICATION

	Component	Material	Finish	Weight
A	Qty. 2 - M12 x 100mm Bolt	316 Stainless Steel	Natural	0.07 kg
B	Qty. 4 - M12 x 60mm Bolt	316 Stainless Steel	Natural	0.065 kg
C	Bracket	316 Stainless Steel	Natural	2.222 kg
D	Qty. 12 - M12 Washer	316 Stainless Steel	Natural	0.007 kg
E	Qty. 6 - M12 Nyloc Nut	316 Stainless Steel	Natural	0.016 kg
			Net Weight	2.38 kg

Technical Data Sheet: 1393

Glyde-Saf™ Rail - 4 Wheel Traveller

Part No: 8521711



APPLICATION

Traveling anchorage connection point for the Self-Retracting Device or Lanyard.

Carabiner sold separately.

Fall Arrest and Fall Restraint applications require one Traveller per user.

Suspension Access applications require two Travellers per user.

See Technical Data Sheet 1396 for allowable number of Travellers per rail span.

COMPONENT SPECIFICATION

Weight	Capacity
1.5 kg	One person up to 141 kg including clothes, tools, etc. per traveller.

	Component	Material	Finish
A	Trolley Plate	Stainless Steel	Natural
B	Qty. 4 - Wheel	Nylatron	
C	Qty. 4 - Wheel Mount Spacer	Steel	Zinc Plated
D	Bearing	Steel	Chrome
E	Qty. 2 - 7/16" x 2.5" Bolt, Plain Cup Point	Steel	Zinc Plated

capital

S A F E T Y

Global Leader in Fall Protection

USA

3833 SALA Way
Red Wing, MN 55066-5005
Toll Free: 800.328.6146
Phone: 651.388.8282
Fax: 651.388.5065
solutions@capitalsafety.com

Brazil

Rua Anne Frank, 2621
Boqueirão Curitiba PR
81650-020
Brazil
Phone: 0800-942-2300
brasil@capitalsafety.com

Mexico

Calle Norte 35, 895-E
Col. Industrial Vallejo
C.P. 02300 Azcapotzalco
Mexico D.F.
Phone: (55) 57194820
mexico@capitalsafety.com

Colombia

Compañía Latinoamericana de Seguridad S.A.S.
Carrera 106 #15-25 Interior 105 Manzana 15
Zona Franca - Bogotá, Colombia
Phone: 57 1 6014777
servicioalcliente@capitalsafety.com

Canada

260 Export Boulevard
Mississauga, ON L5S 1Y9
Phone: 905.795.9333
Toll-Free: 800.387.7484
Fax: 888.387.7484
info.ca@capitalsafety.com

EMEA (Europe, Middle East, Africa)

EMEA Headquarters:
5a Merse Road
North Moons Moat
Redditch, Worcestershire
B98 9HL UK
Phone: + 44 (0)1527 548 000
Fax: + 44 (0)1527 591 000
csgne@capitalsafety.com

France:

Le Broc Center
Z.I. 1re Avenue - BP15
06511 Carros Le Broc Cedex
France
Phone: + 33 04 97 10 00 10
Fax: + 33 04 93 08 79 70
information@capitalsafety.com

Australia & New Zealand

95 Derby Street
Silverwater
Sydney NSW 2128
Australia
Phone: +(61) 2 8753 7600
Toll-Free : 1800 245 002 (AUS)
Toll-Free : 0800 212 505 (NZ)
Fax: +(61) 2 8753 7603
sales@capitalsafety.com.au

Asia

Singapore:
69, Ubi Road 1, #05-20
Oxley Bizhub
Singapore 408731
Phone: +65 - 65587758
Fax: +65 - 65587058
inquiry@capitalsafety.com

Shanghai:

Rm 1406, China Venturetech Plaza
819 Nan Jing Xi Rd,
Shanghai 200041, P R China
Phone: +86 21 62539050
Fax: +86 21 62539060
inquiry@capitalsafety.com

www.capitalsafety.com

